

It is the responsibility of the person installing the electrical equipment to ensure that the installation meets the requirements of the IET wiring regulations and is therefore 'fit for purpose'. Factors such as correct selection of components, cable sizing, protective devices and Earth bonding are all critical and should be checked prior to full testing and power-up. Any other regulations applicable to the equipment being installed such as the Machinery Directive and current health and safety legislation must also be adhered to.

All connections (including factory made) must be checked for the correct tightness prior to commissioning of the electrical installation. All connections should be inspected periodically to ensure correct tightness.

DO NOT USE POWER TOOLS ON THESE PRODUCTS

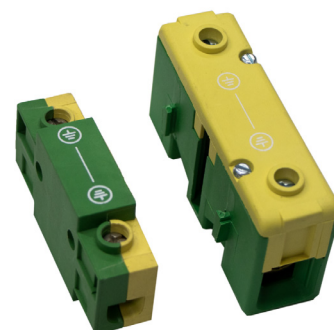
Europa Helpline: 01582 692 444 / **Email:** technical@europacomponents.com

Europa House, Airport Way, Luton, Beds, LU2 9NH Tel: 01582 692 440

e-mail: sales@europacomponents.com website: www.europacomponents.com



Part Number: **LB263EL, LB2125EL** **Earth Links**



Auxiliary / Switch Lookup Table

Enclosure / Switch Size	Potential Number of Additional Auxiliaries
3P PC Enclosure 32-80A	1 Auxiliary
4P PC Enclosure 20-40A	-
4P PC Enclosure 63-80A	1 Auxiliary
4P PC Enclosure 100-125A	-
4P Large PC Enclosure 25-40A	1 Auxiliary
3P Metal Clad 25-80A	1 Auxiliary
4P Metal Clad 25-125A	1 Auxiliary
4P Die Cast 25-63A	1 Auxiliary
4P Stainless Steel 25-40A	-
4P Stainless Steel 63-80A	1 Auxiliary
6P PC Enclosure 25-40A	2 Auxiliaries (One on either side)
6P PC Enclosure 63-125A	2 Auxiliaries (One on either side)
8P PC Enclosure 25-40A	-
8P PC Enclosure 63-125A	-
4P PC Enclosure Change Over 25-40A	-
4P Metal Clad Change Over 32-63A	-
4P Metal Enc Change Over 63-125A	-

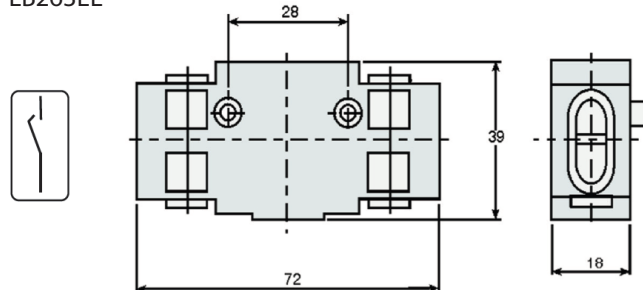


Can be fitted either side of switch.
For switch ratings and recommended torque for terminals please see the corresponding switch datasheet.

Dimensions

Recommended tightening torque for fixing screws 0.3Nm

LB263EL



LB2125EL

