

It is the responsibility of the person installing the electrical equipment to ensure that the installation meets the requirements of the IET wiring regulations and is therefore 'fit for purpose'. Factors such as correct selection of components, cable sizing, protective devices and Earth bonding are all critical and should be checked prior to full testing and power-up. Any other regulations applicable to the equipment being installed such as the Machinery Directive and current health and safety legislation must also be adhered to.

All connections (including factory made) must be checked for the correct tightness prior to commissioning of the electrical installation.
All connections should be inspected periodically to ensure correct tightness.

DO NOT USE POWER TOOLS ON THESE PRODUCTS

Europa Helpline: 01582 692 444 / **Email:** technical@europacomponents.com

Europa House, Airport Way, Luton, Beds, LU2 9NH Tel: 01582 692 440

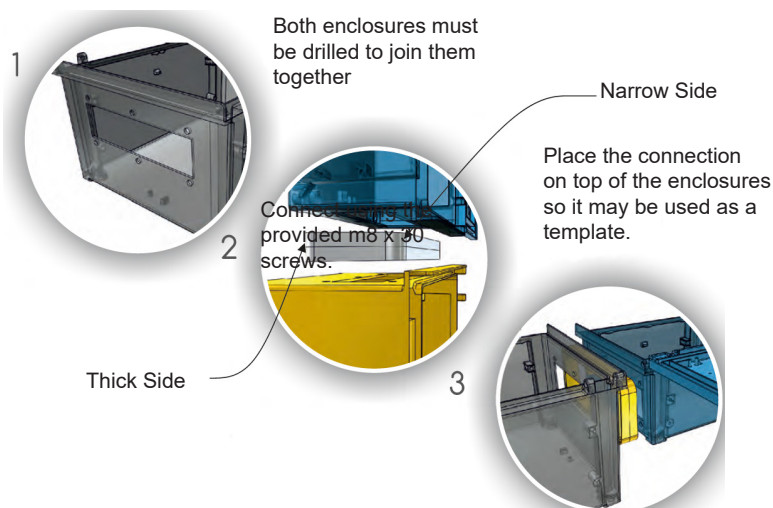
e-mail: sales@europacomponents.com website: www.europacomponents.com

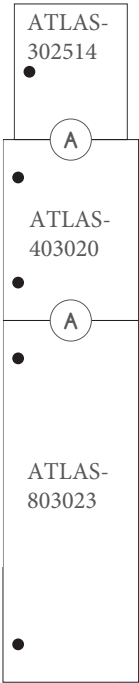
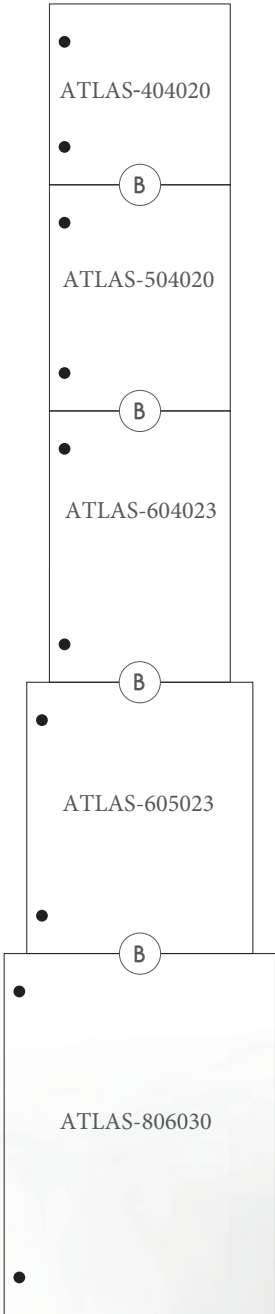


Connection Flanges

Part Number: ATLAS-UA-*****

Code	Product Description
ATLAS-UA-230X100	Connection flange through the top / bottom of the Atlas-302514 & Atlas-403020 enclosures
ATLAS-UA-350X150	Connection flange through the top / bottom of the Atlas- 404020, Atlas-504020, Atlas-604023, Atlas-605023, Atlas-803023 & Atlas-806030
ATLAS-UA-350X150-B	Connection flange for the laterals of Atlas-803023 & Atlas-806030





ATLAS-302514 + ATLAS-403020

