

### ⚠ Important Safety Notice

It is the responsibility of the person installing the electrical equipment to ensure that the installation meets the requirements of the IET wiring regulations and is therefore 'fit for purpose'. Factors such as correct selection of components, cable sizing, protective devices and Earth bonding are all critical and should be checked prior to full testing and power-up. Any other regulations applicable to the equipment being installed such as the Machinery Directive and current health and safety legislation must also be adhered to.

All connections (including factory made) must be checked for the correct tightness prior to commissioning of the electrical installation.

All connections should be checked periodically to ensure correct tightness.

**DO NOT USE POWER TOOLS ON THESE PRODUCTS**



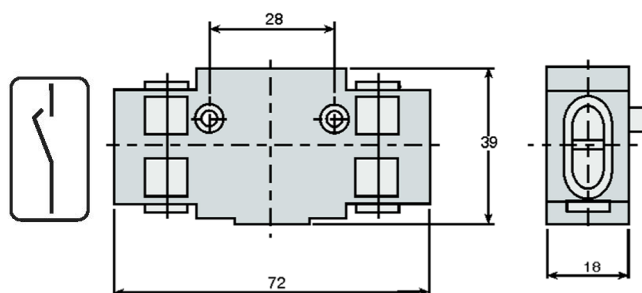
### Auxiliary / Switch Look up Table

Load Break Enclosure / Switch Size	Potential Number of Additional Auxiliaries
3P Enclosed 32-80A	1 Auxiliary
4P Enclosed 20-40A	-
4P Enclosed 63-80A	1 Auxiliary
4P Enclosed 100-125A	-
4P Large Enclosure 25-40A	1 Auxiliary
3P Metal Clad 25-80A	1 Auxiliary
4P Metal Clad 25-125A	1 Auxiliary
4P Diecast 25-63A	1 Auxiliary
4P Stainless Steel 25-40A	-
4P Stainless Steel 63-80A	1 Auxiliary
6P Enclosed 25-40A	2 Auxiliaries (1 either side)
6P Enclosed 63-125A	2 Auxiliaries (1 either side)
8P Enclosed 25-40A	-
8P Enclosed 63-125A	-
4P Enclosed Change Over 25-40A	-
4P Metal Clad Change Over 32-63A	-
4P Metal Enc Change Over 63-125A	-

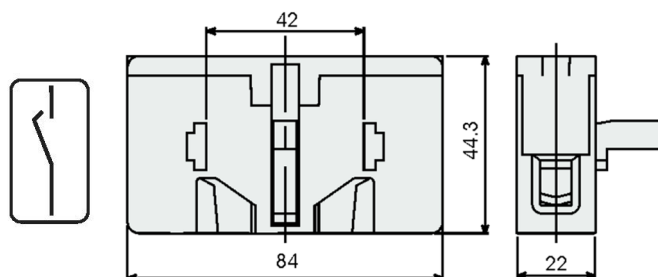
### Can be fitted either side of the switch

For switch ratings and recommended torque for terminals please see the corresponding switch data sheet

### LB263AUXEMFM, LB263AUXEM 25-63A



### LB212AUXEMFM / LB2125AUXEM 80-125A



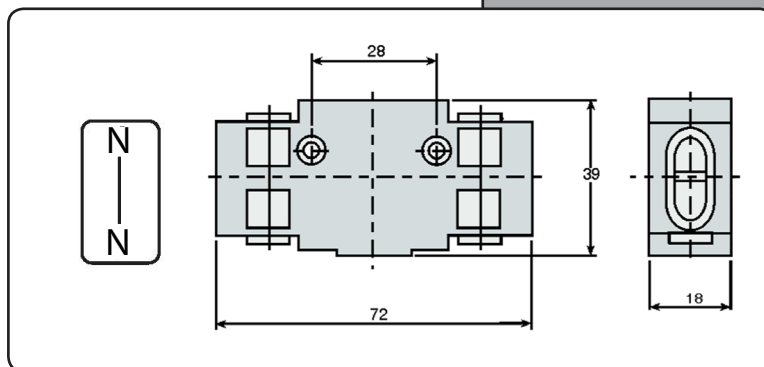
## Auxiliary / Switch Look up Table

Load Break Enclosure / Switch Size	Potential Number of Additional Auxiliaries
3P Enclosed 32-80A	1 Auxiliary
4P Enclosed 20-40A	-
4P Enclosed 63-80A	1 Auxiliary
4P Enclosed 100-125A	-
4P Large Enclosure 25-40A	1 Auxiliary
3P Metal Clad 25-80A	1 Auxiliary
4P Metal Clad 25-125A	1 Auxiliary
4P Diecast 25-63A	1 Auxiliary
4P Stainless Steel 25-40A	-
4P Stainless Steel 63-80A	1 Auxiliary
6P Enclosed 25-40A	2 Auxiliaries (1 either side)
6P Enclosed 63-125A	2 Auxiliaries (1 either side)
8P Enclosed 25-40A	-
8P Enclosed 63-125A	-
4P Enclosed Change Over 25-40A	-
4P Metal Clad Change Over 32-63A	-
4P Metal Enc Change Over 63-125A	-

### Can be fitted either side of the switch

For switch ratings and recommended torque for terminals please see the corresponding switch data sheet

#### LB263AUXL 25-63A



#### LB2125AUXL 80-125A

