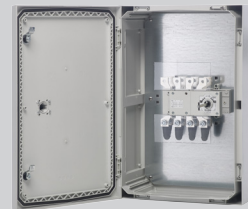


## ⚠ Important Safety Notice ⚠

It is the responsibility of the person installing the electrical equipment to ensure that the installation meets the requirements of the IET wiring regulations and is therefore 'fit for purpose'. Factors such as correct selection of components, cable sizing, protective devices and Earth bonding are all critical and should be checked prior to full testing and power-up. Any other regulations applicable to the equipment being installed such as the Machinery Directive and current health and safety legislation must also be adhered to. Terminals, including factory fitted, must be checked for the correct tightness prior to commissioning of the electrical installation. All terminals should be checked periodically to ensure correct tightness

**DO NOT USE POWER TOOLS ON THESE PRODUCTS**

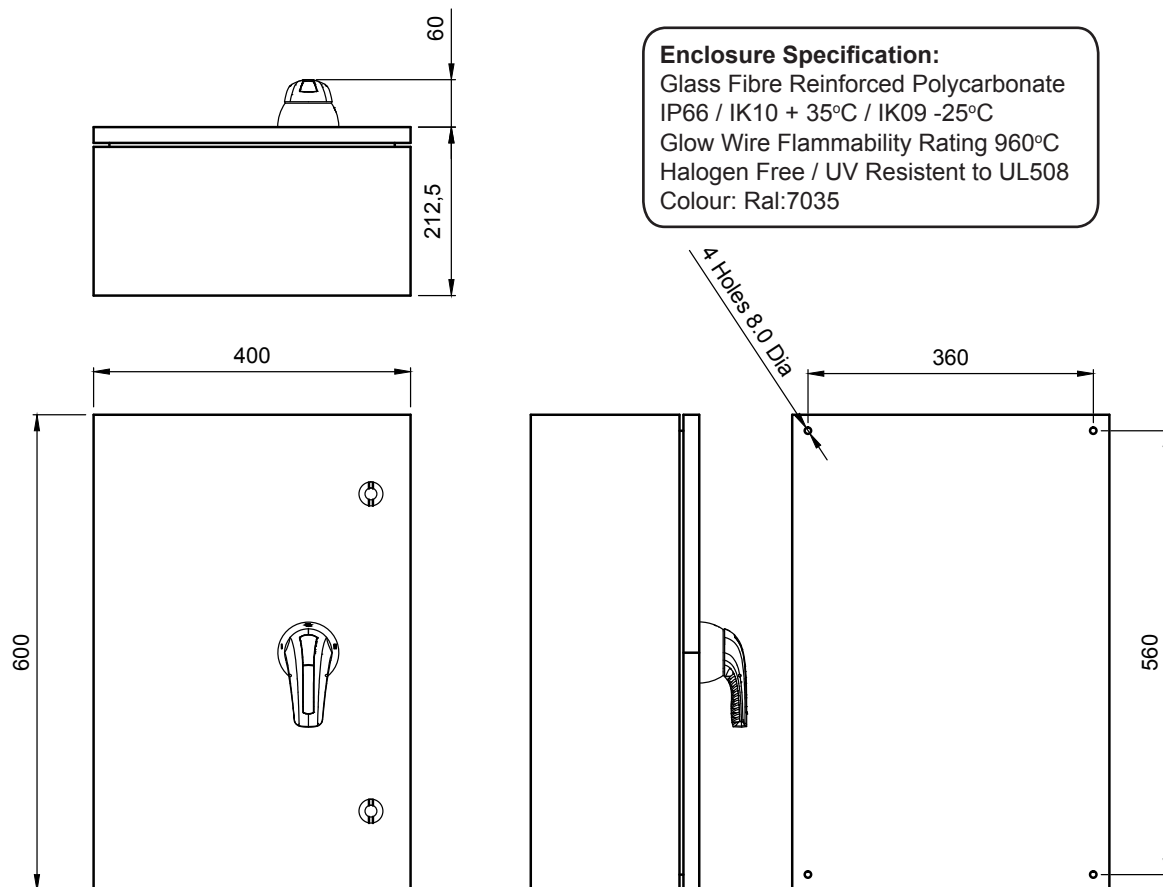


☑ Bureau Vertitas ☑ KEMA Certified ☑ EN 60947-1 & 3 Compliant ☑ IP66



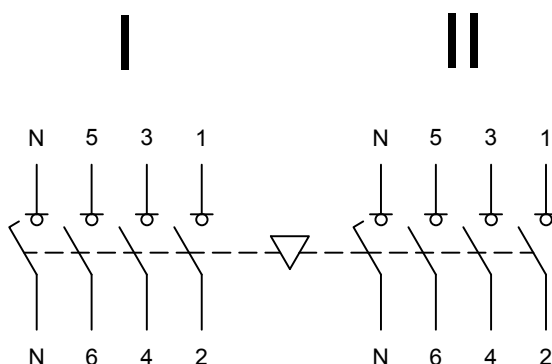
Data	Range	Units	LBC1603PSNGP	LBC2003PSNGP	LBC2503PSNGP
Rated thermal lth current at 40°C	Amps	A	160	200	250
Rated insulation voltage Ui	Volts	V	1000	1000	1000
Rated dielectric strength	Volts	kV	4	5	5
Rated impulse voltage Uimp	Volts	kV	8	8	8
Rated operational current Ie at 400V AC-22	Amps	A	160	200	250
Rated operational current Ie at 400V AC-23	Amps	A	160	160	160
Rated operational power Pe at 400V AC-23	Watts	kW	89	89	89
Rated breaking capacity	Amps	A	1280	1280	1280
Rated making capacity	Amps	A	1600	1600	1600
Rated short circuit making capacity (peak value) Icm	Amps	kA	13	13	13
Rated short-time withstand current (1 sec) rms Icw	Amps	kA	7	7	7
Minimum number of mechanical operations	-	Cycles	10,000	10,000	10,000
Minimum number of electrical operations @ 400V AC-22	-	Cycles	1,000	1,000	1,000
Terminal Capacity (rigid copper cable)	-	mm <sup>2</sup>	95	120	120
Lug bolt size	-	-	M10	M10	M10
Maximum size of busbar connection	-	mm	5x25	5x30	5x30
Tightening torque	-	Nm	13	13	13

## Enclosure Dimensions:



## Terminal Configuration:

LBC 3 Pole +  
Switched Neutral



Note: Neutral Contact is  
Early Make/ Late Break

ⓘ ALL PRODUCTS, PRODUCT SPECIFICATIONS AND DATA ARE SUBJECT TO CHANGE WITHOUT NOTICE.

Information provided in data sheets and/or specifications may vary from actual results in different applications and performance may vary over time.

Europa House, Airport Way, Luton, Beds, LU2 9NH Tel: 01582 692 440 / Fax: 01582 692 450 e-mail: sales@europacomponents.com  
 website: <http://www.europacomponents.com>