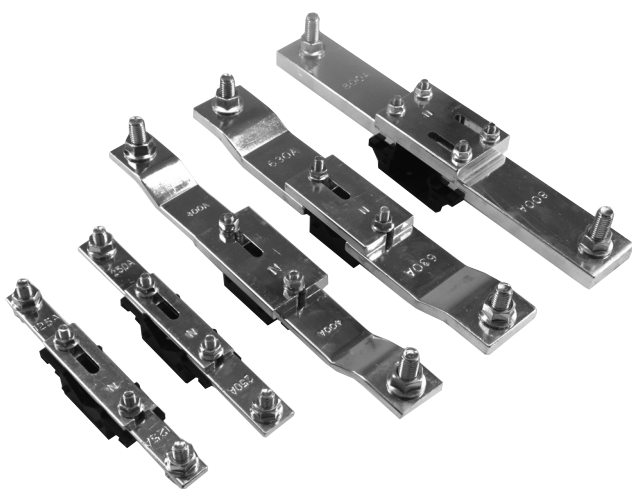


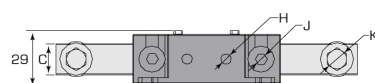
### ⚠ Important Safety Notice ⚠

It is the responsibility of the person installing the electrical equipment to ensure that the installation meets the requirements of the IET wiring regulations and is therefore 'fit for purpose'. Factors such as correct selection of components, cable sizing, protective devices and Earth bonding are all critical and should be checked prior to full testing and power-up. Any other regulations applicable to the equipment being installed such as the Machinery Directive and current health and safety legislation must also be adhered to. All connections (including factory made) must be checked for the correct tightness prior to commissioning of the electrical installation. All connections should be checked periodically to ensure correct tightness.

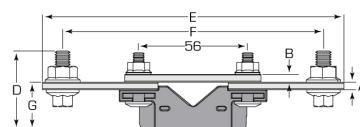
**DO NOT USE POWER TOOLS ON THESE PRODUCTS**



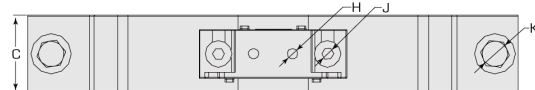
- 100% Fully Rated
- Tested to IEC 61439
- Conductor: Tin Plated High Conductivity Copper
- Support: Glass Reinforced Polyamide 6.6
- Equipment Voltage  $U_e$ : 690V
- Insulation Voltage  $U_i$ : 690V
- Impulse Voltage  $U_{imp}$ : 8kV
- Glow Wire: 960°C
- Easy to use link disconnect
- UL 94-VO shroud covers available for added protection



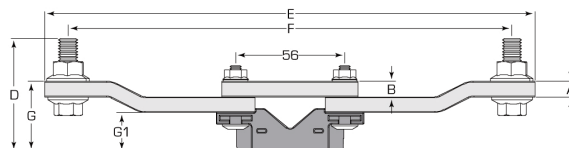
Bottom View: 125, 250 (Max Tight Torque M6 6Nm, M8 19Nm, (H) 4Nm)



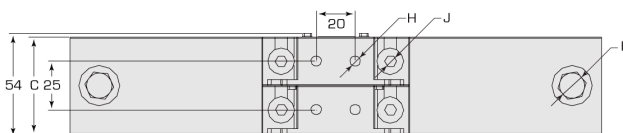
Side View: 125, 250



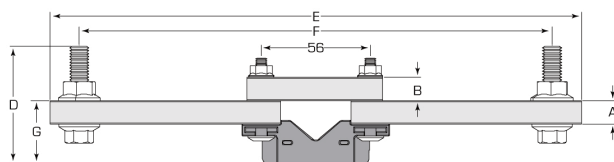
Bottom View: 400, 630 (Max Tight Torque M6 6Nm, M10 32Nm, (H) 4Nm)



Side View: 400, 630



Bottom View: 800,1000 (Max Tight Torque M6 6Nm, M10 32Nm, (H) 4Nm)



Side View: 800,1000

Product	Current rating	A	B	C	D	E	F	G (G1)	H	J	K
LBNL125A	125A	4	4	16	40	155	134	24	5.5	M6	M8 X 20
LBNL250A	250A	4	4	20	40	165	144	24	5.5	M6	M8 X 20
LBNL400A	400A	6	8	30	60	252	228	36 (20)	5.5	M6	M10 X 25
LBNL630A	630A	8	8	40	60	252	228	36 (20)	5.5	M6	M10 X 25
LBNL800A	800A	12	12	40	55	273	243	32	5.5	M6	M10 X 40
LBNL1000A	1000A	12	12	50	60	273	243	32	5.5	M6	M10 X 40

Europa House, Airport Way, Luton, Beds, LU2 9NH Tel: 01582 692 440 / Fax: 01582 692 450 e-mail: [sales@europacomponents.com](mailto:sales@europacomponents.com)

website: <http://www.europacomponents.com>