

### ⚠ Important Safety Notice ⚠

It is the responsibility of the person installing the electrical equipment to ensure that the installation meets the requirements of the IEE wiring regulations and is therefore 'fit for purpose'. Factors such as correct selection of components, cable sizing, protective devices and Earth bonding are all critical and should be checked prior to full testing and power-up. Any other regulations applicable to the equipment being installed such as the Machinery Directive and current health and safety legislation must also be adhered to. Terminals should be checked periodically to ensure correct tightness.

Some manufactures star delta starters are fitted with overload relays calibrated for full load current (**red scale**). Normal production overloads are calibrated for tripping / operating current (**black scale**).

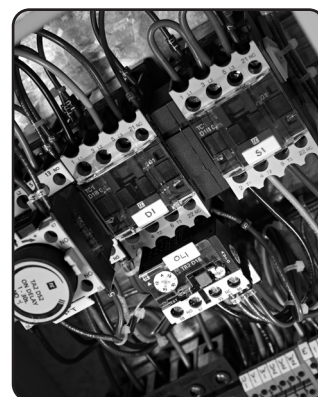
Europa Components star delta starters are always fitted with black scale and the overload fitted should be set to the **full load motor current divided by 1.732**

The table below shows the correct overload value for the FLC of the motor.



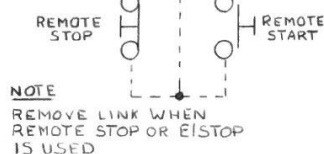
### ⓘ Overload Selection chart

Part Number	Overload Value (Black Scale)	Motor FLC (Red Scale)
TR2-D09305	0.63-1.00A	1.09-1.73A
TR2-D09306	1.00-1.65A	1.73-2.86A
TR2-D09307	1.60-2.50A	2.8-4.33A
TR2-D09308	2.5-4.0A	4.3A-6.9A
TR2-D09310	4.0-6.0A	6.9-10.4A
TR2-D09312	5.5-8.0A	9.5-10.4A
TR2-D09314	7.0-10.0A	12.1-17.3A
TR2-D12316	9.0-13.0A	15.6-22.5A
TR2-D18321	12.0-18.0A	20.8-31.2A
TR2-D25322	17.0-25.0A	29.5-43.3A
TR2-D32353	23.0-32.0A	39.8-55.4A
TR2-D32355	30.0-40.0A	52.0-69.3A
TR2-D40353	23.0-032.0A	39.8-55.4A
TR2-D40355	30.0-40.0A	52.0-69.3A
TR2-D65357	37.0-50.0A	64.0-86.6A
TR2-D65359	48.0-65.0A	83.14-112.6A
TR2-D65361	55.0-70.0A	95.3-121.3A
TR2-D80363	63.0-80.0A	109.0-138.6A
TR2-D95365	80.0-93.0A	138.6-161.1A



### ⓘ SDS Enclosure Dimensions

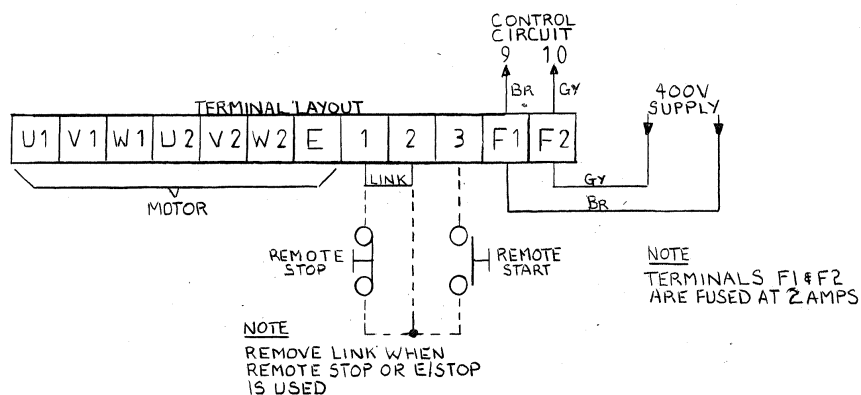
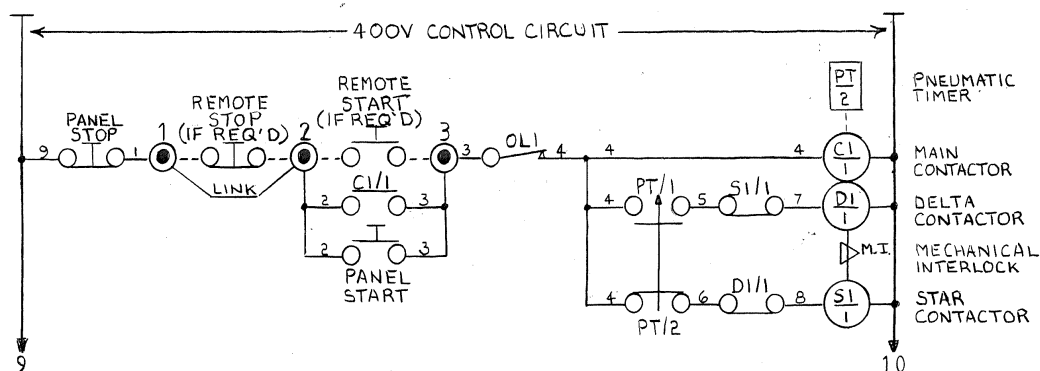
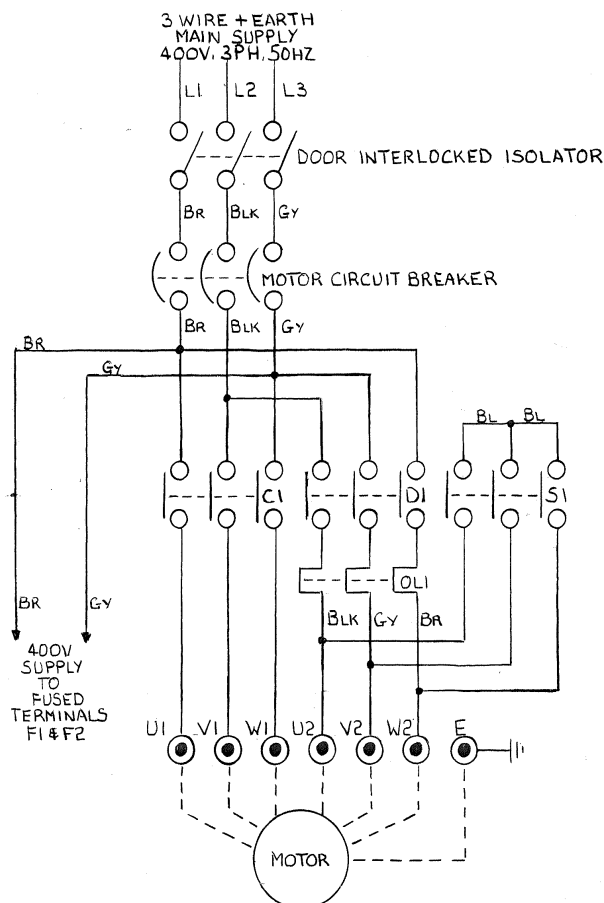
KW Rating	Height mm	Width mm	Depth mm
11KW	400mm	300mm	200mm
15KW	400mm	300mm	200mm
22KW	400mm	300mm	200mm
30KW	600mm	400mm	200mm
37KW	600mm	500mm	200mm
45KW	600mm	500mm	200mm
55KW	600mm	500mm	200mm



NOTE  
TERMINAL F1  
IS FUSED AT 2AMPS

ISSUE	CHANGE DETAIL	DATE	APP				DRAWN BY	DATE OCT '10	ISSUE
					PROJECT	TYPICAL STAR/DELTA STARTER WITH 230V CONTROL CIRCUIT	DRG. No.		
					TITLE	ELECTRICAL SCHEMATIC	SHEET 1 OF 1	PANEL No.	

NOTE  
OLI = MOTOR OVERLOAD RELAY



ISSUE	DATE	DRAWN BY	R.A.	MAR '10	ISSUE	O	PANEL No.	SHEET 1 OF 1	ELECTRICAL SCHEMATIC	TITLE	PROJECT	CUSTOMER	Europa components				APP.	DATE	CHANGE DETAIL	ISSUE
													Tel: 01582 692 440 / Fax: 01582 692 450 <a href="http://www.europacomponents.com">http://www.europacomponents.com</a>							