

This document must be retained for future reference.

It is the responsibility of the person installing the electrical equipment to ensure that the installation meets the requirements of the IET wiring regulations and is therefore 'fit for purpose'. Factors such as correct selection of components, cable sizing, protective devices and Earth bonding are all critical and should be checked prior to full testing and power-up. Any other regulations applicable to the equipment being installed such as the Machinery Directive and current health and safety legislation must also be adhered to.

All connections (including factory made) must be checked for the correct tightness prior to commissioning of the electrical installation.  
All connections should also be inspected periodically to ensure correct tightness.

DO NOT USE POWER TOOLS ON THESE PRODUCTS



## LBD3153P/PSN AC-23@400V(415V) Door Interlocked Load Break Switches

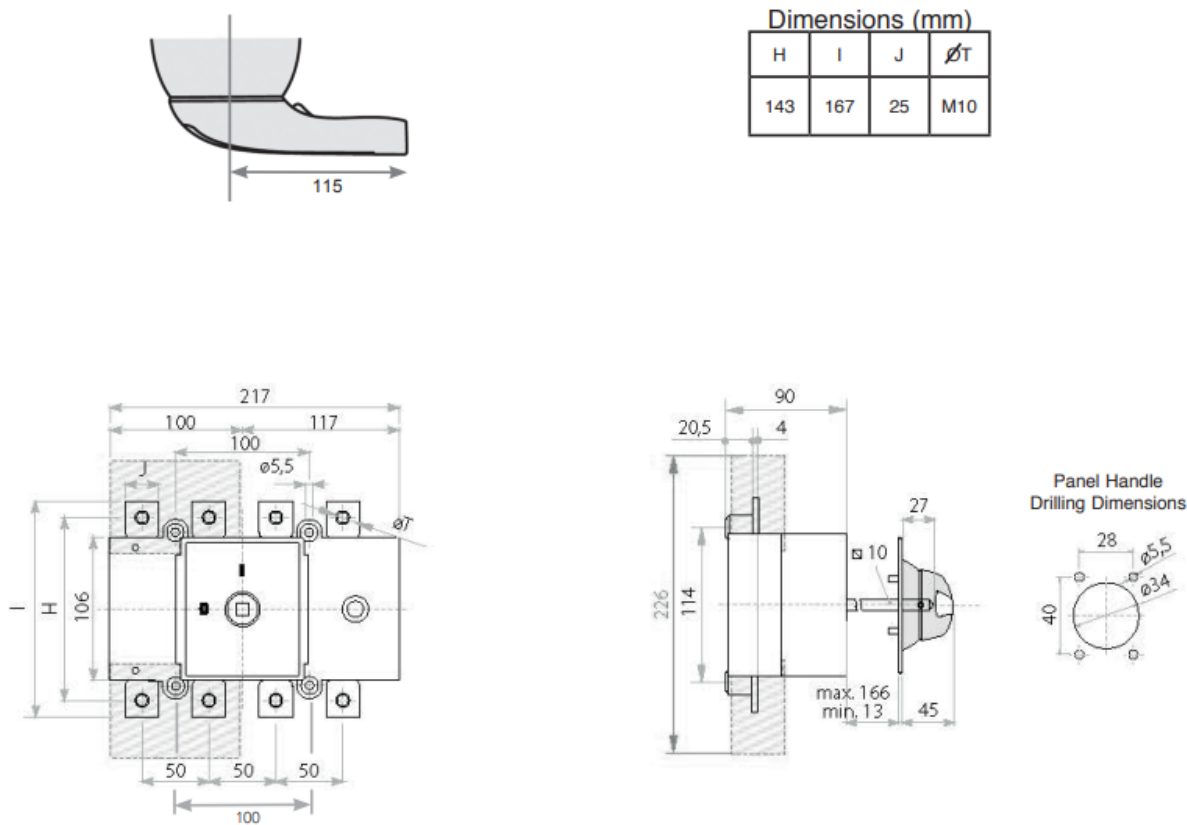
- IP65
- EN 60947-1 & 3 Compliant



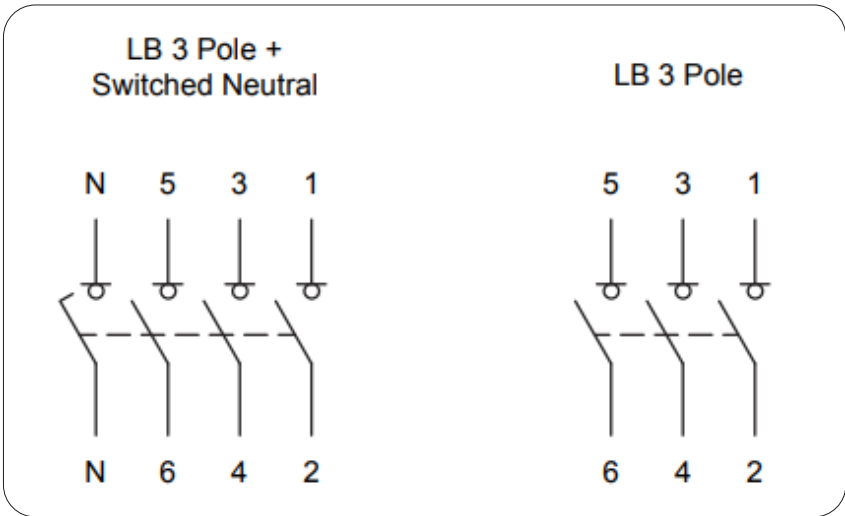
Data	Range	Units	LBD3153P LBD3153PSN
Rated thermal current I <sub>th</sub> at 50°C	Amps	A	315
Rated insulation voltage U <sub>i</sub>	Volts	V	1000
Rated dielectric strength	Volts	kV	5
Rated impulse voltage U <sub>imp</sub>	Volts	kV	8
Rated operational current I <sub>e</sub> at 400V AC-22	Amps	A	315
Rated operational current I <sub>e</sub> at 400V AC-23	Amps	A	315
Rated operational power P <sub>e</sub> at 400V AC-23	Watts	kW	175
Rated breaking capacity	Amps	A	2520
Rated making capacity	Amps	A	3150
Rated short circuit making capacity (peak value) I <sub>cm</sub>	Amps	kA	20
Rated short-time withstand current (1 sec) rms I <sub>cw</sub>	Amps	kA	12
Minimum number of mechanical operations	-	Cycles	20,000
Minimum number of electrical operations @ 400V AC-23	-	Cycles	1,000
Terminal Capacity (rigid copper cable)	-	mm <sup>2</sup>	185
Lug bolt size	-	-	M10
Maximum size of busbar connection	-	mm	7x25
Tightening torque	-	Nm	18

LBD3153P/PSN AC-23@400V(415V)  
Door Interlocked Load Break Switches

Enclosure Dimensions



Terminal Configuration



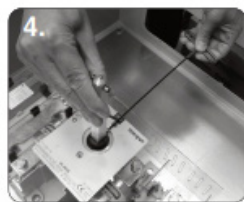
Note: Neutral Contact is Early Make/Late Break

## LBD3153P/PSN AC-23@400V(415V) Door Interlocked Load Break Switches



### Handle Assembly:

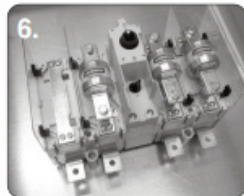
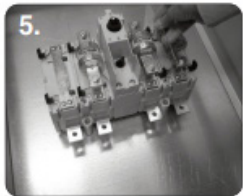
1. Ensure that the handle is in the off position and locate the handle on to the door with the handle showing the off position at 9 o' clock
2. Tighten the four M5, flange nuts to 1.5Nm



### Shaft Assembly:

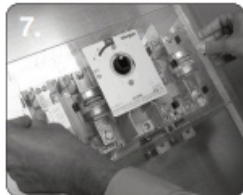
3. Ensure that the switch is in the off position and fully insert the shaft into the switch with the cross pin in a horizontal position

4. Tighten the M5 shaft grub screw to 1.2Nm using a 2.5mm A/F allen key



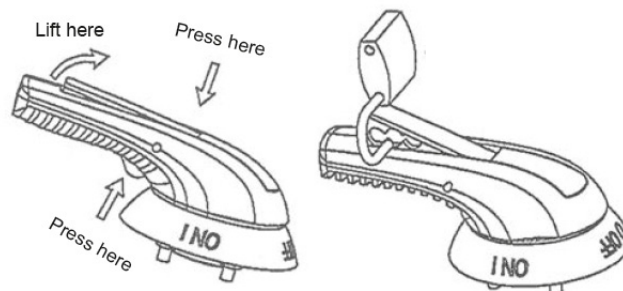
### Fuse Shroud Assembly: (SWITCH FUSE ONLY)

- 5/6. Install the four upright shrouds into the corresponding clips



7. Install fuse shroud into the corresponding clips

## Padlock Operation



## Door Interlock Defeat

### Mechanism (For Authorised Personnel Only);

### WARNING! ACCESS TO LIVE PARTS

- Ensure that the door is closed and the handle is in the on position
- Locate the hole on the right side of the handle, then push and hold a small pin into the hole to activate the defeat mechanism
- The door can now be opened in the on position. Remove pin and close the door to reset the mechanism



## Handles, Shafts and Extended Shafts for Enclosed and Door Interlocked Changeover Switches

Product Prefix	Blue & White Handle	Red & Yellow Handle	Shaft Section (mm)	L (mm)	P (mm)	S (mm)	D (mm)		
Standard Handle and Shafts									
LB160/LBD160	LBPHBW010	LBPHRY010	□7	177	87-197	94	45		
LB200/LBD200									
LB250/LBD250									
LB315/LBD315	LBPHBW020	LBPHRY020	□10	227	103-256	115	45		
LB400/LBD400									
LB500/LBD500	LBPHBW080	LBPHRY030	□14	195	134-240	143	60		
LB630/LBD630									
LB800/LBD800									
LB1000/LBD1000	LBPHBW090	LBPHRY090		186	145-242	396			
Extended Shafts									
Product Prefix	Extended Shaft Type 1	Shaft Section (mm)	L (mm)	P (mm)	Extended Shaft Type 2	L (mm)	P(mm)		
LBD160	LBES010	□7	250	87-270	LBES020	387	87-407		
LBD200									
LBD250									
LBD315	LBES030	□10	375	103-404	LBES040	536	103-565		
LBD400									
LBD500	LBES050	□14	345	134-390	LBES060	535	134-580		
LBD630									
LBD800				145-401			145-591		
LBD1000									

