

This document must be retained for future reference.

It is the responsibility of the person installing the electrical equipment to ensure that the installation meets the requirements of the IET wiring regulations and is therefore 'fit for purpose'. Factors such as correct selection of components, cable sizing, protective devices and Earth bonding are all critical and should be checked prior to full testing and power-up. Any other regulations applicable to the equipment being installed such as the Machinery Directive and current health and safety legislation must also be adhered to.

All connections (including factory made) must be checked for the correct tightness prior to commissioning of the electrical installation.
All connections should also be inspected periodically to ensure correct tightness.

DO NOT USE POWER TOOLS ON THESE PRODUCTS



LBD500-8003P/PSN AC-23@400V(415V) (800A AC-22)

Door Interlocked Load Break Switches

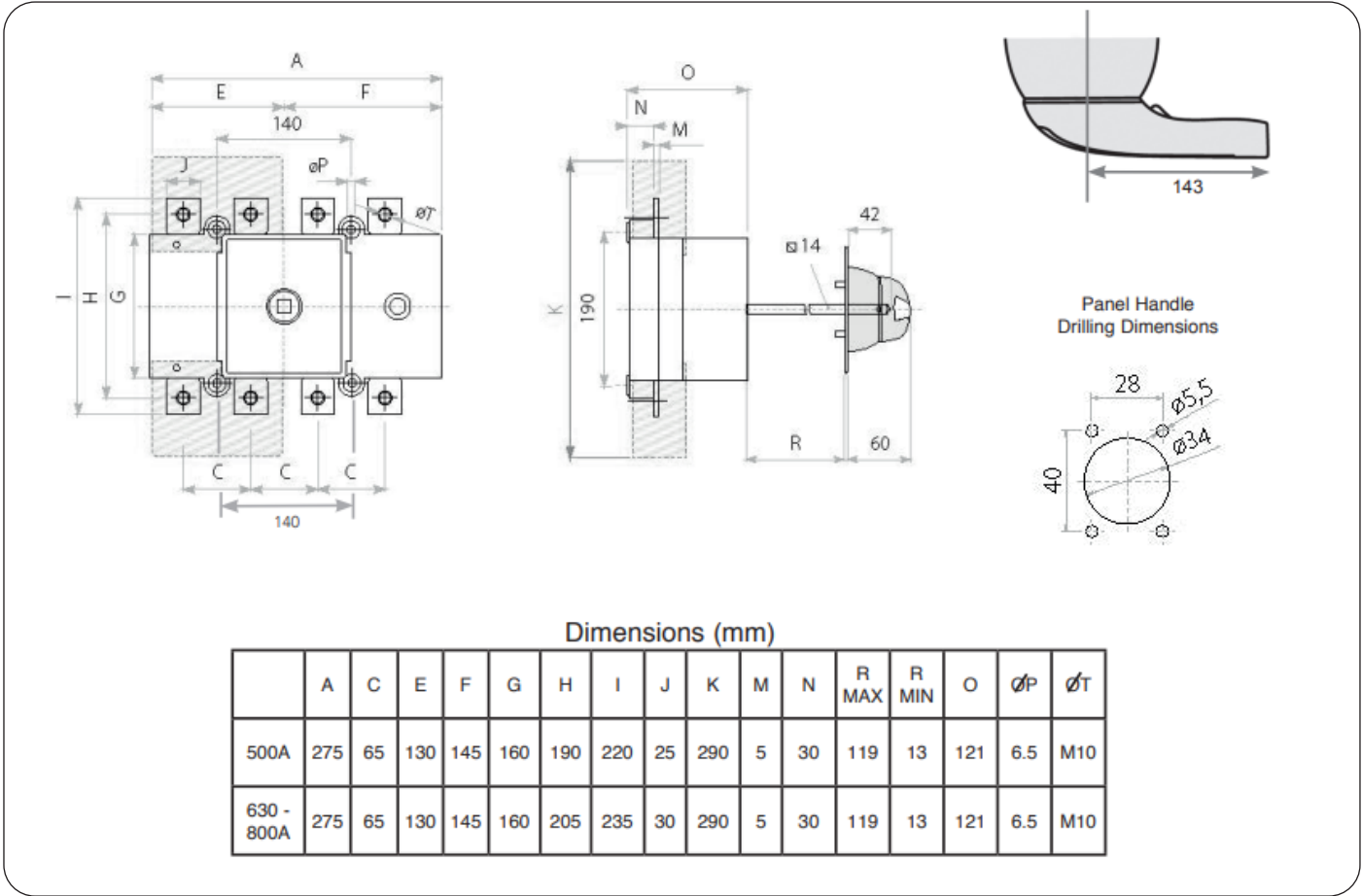
- IP65
- EN 60947-1 & 3 Compliant



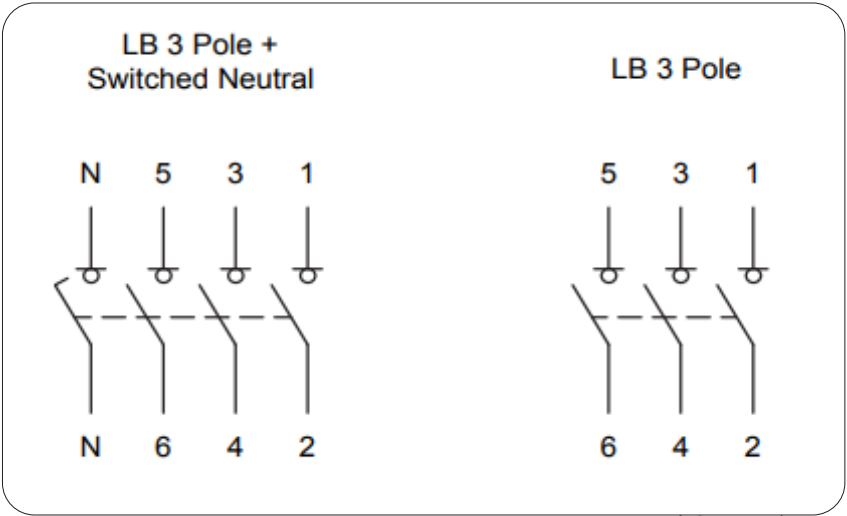
Data	Range	Units	LBD5003P LBD5003PSN	LBD6303P LBD6303PSN	LBD8003P LBD8003PSN
Rated thermal current I _{th} at 50°C	Amps	A	500	630	800
Rated insulation voltage U _i	Volts	V	1000	1000	1000
Rated dielectric strength	Volts	kV	8	8	8
Rated impulse voltage U _{imp}	Volts	kV	12	12	12
Rated operational current I _e at 400V AC-22	Amps	A	500	630	800
Rated operational current I _e at 400V AC-23	Amps	A	500	630	630
Rated operational power P _e at 400V AC-23	Watts	kW	277	349	349
Rated breaking capacity	Amps	A	4000	5000	5000
Rated making capacity	Amps	A	5000	6300	6300
Rated short circuit making capacity (peak value) I _{cm}	Amps	kA	26	26	26
Rated short-time withstand current (1 sec) rms I _{cw}	Amps	kA	16	16	16
Minimum number of mechanical operations	-	Cycles	10,000	10,000	10,000
Minimum number of electrical operations @ 400V AC-23	-	Cycles	1,000	1,000	1,000
Terminal Capacity (rigid copper cable)	-	mm ²	2x185	2x240	2x240
Lug bolt size	-	-	M10	M10	M10
Maximum size of busbar connection	-	mm	6x40	2x5x40	2x5x40
Tightening torque	-	Nm	24	24	24

LBD500-8003P/PSN AC-23@400V(415V) (800A AC-22)
Door Interlocked Load Break Switches

Enclosure Dimensions

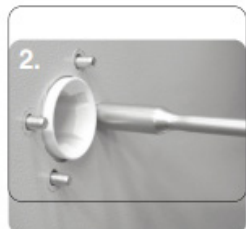


Terminal Configuration



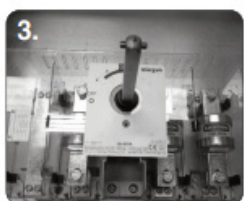
Note: Neutral Contact is
Early Make/Late Break

LBD500-8003P/PSN AC-23@400V(415V) (800A AC-22) Door Interlocked Load Break Switches



Handle Assembly:

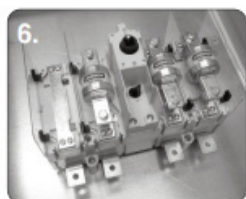
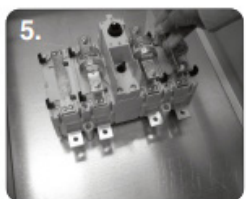
1. Ensure that the handle is in the off position and locate the handle on to the door with the handle showing the off position at 9 o' clock
2. Tighten the four M5, flange nuts to 1.5Nm



Shaft Assembly:

3. Ensure that the switch is in the off position and fully insert the shaft into the switch with the cross pin in a horizontal position

4. Tighten the M5 shaft grub screw to 1.2Nm using a 2.5mm A/F allen key



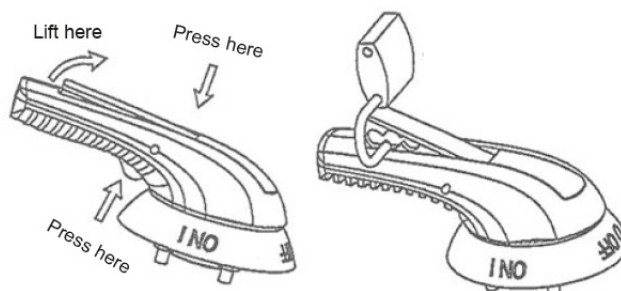
Fuse Shroud Assembly: (SWITCH FUSE ONLY)

- 5/6. Install the four upright shrouds into the corresponding clips



7. Install fuse shroud into the corresponding clips

Padlock Operation



Door Interlock Defeat

Mechanism (For Authorised Personnel Only);

WARNING! ACCESS TO LIVE PARTS

- Ensure that the door is closed and the handle is in the on position
- Locate the hole on the right side of the handle, then push and hold a small pin into the hole to activate the defeat mechanism
- The door can now be opened in the on position. Remove pin and close the door to reset the mechanism



Handles, Shafts and Extended Shafts for Enclosed and Door Interlocked Changeover Switches

Product Prefix	Blue & White Handle	Red & Yellow Handle	Shaft Section (mm)	L (mm)	P (mm)	S (mm)	D (mm)	
Standard Handle and Shafts								
LB160/LBD160	LBPHBW010	LBPHRY010	□7	177	87-197	94	45	
LB200/LBD200								
LB250/LBD250								
LB315/LBD315	LBPHBW020	LBPHRY020	□10	227	103-256	115	45	
LB400/LBD400								
LB500/LBD500	LBPHBW080	LBPHRY030	□14	195	134-240	143	60	
LB630/LBD630								
LB800/LBD800								
LB1000/LBD1000	LBPHBW090	LBPHRY090		186	145-242	396		
Extended Shafts								
Product Prefix	Extended Shaft Type 1	Shaft Section (mm)	L (mm)	P (mm)	Extended Shaft Type 2	L (mm)	P(mm)	
LBD160	LBES010	□7	250	87-270	LBES020	387	87-407	
LBD200								
LBD250								
LBD315	LBES030	□10	375	103-404	LBES040	536	103-565	
LBD400								
LBD500	LBES050	□14	345	134-390	LBES060	535	134-580	
LBD630				145-401			145-591	
LBD800								
LBD1000								

