

This document must be retained for future reference.

It is the responsibility of the person installing the electrical equipment to ensure that the installation meets the requirements of the IET wiring regulations and is therefore 'fit for purpose'. Factors such as correct selection of components, cable sizing, protective devices and Earth bonding are all critical and should be checked prior to full testing and power-up. Any other regulations applicable to the equipment being installed such as the Machinery Directive and current health and safety legislation must also be adhered to.

All connections (including factory made) must be checked for the correct tightness prior to commissioning of the electrical installation.  
All connections should also be inspected periodically to ensure correct tightness.

DO NOT USE POWER TOOLS ON THESE PRODUCTS



## 125A SWITCH DISCONNECTORS and CHANGEOVER SWITCHES

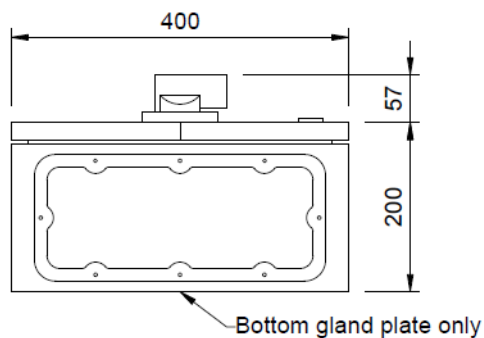
6 Pole, 8 Pole Switch Disconnectors and  
4 Pole Changeover Switches

✓ IP65 Rated    ✓ IEC / EN 60947-3    ✓ Epoxy Coated Strong Steel Enclosure



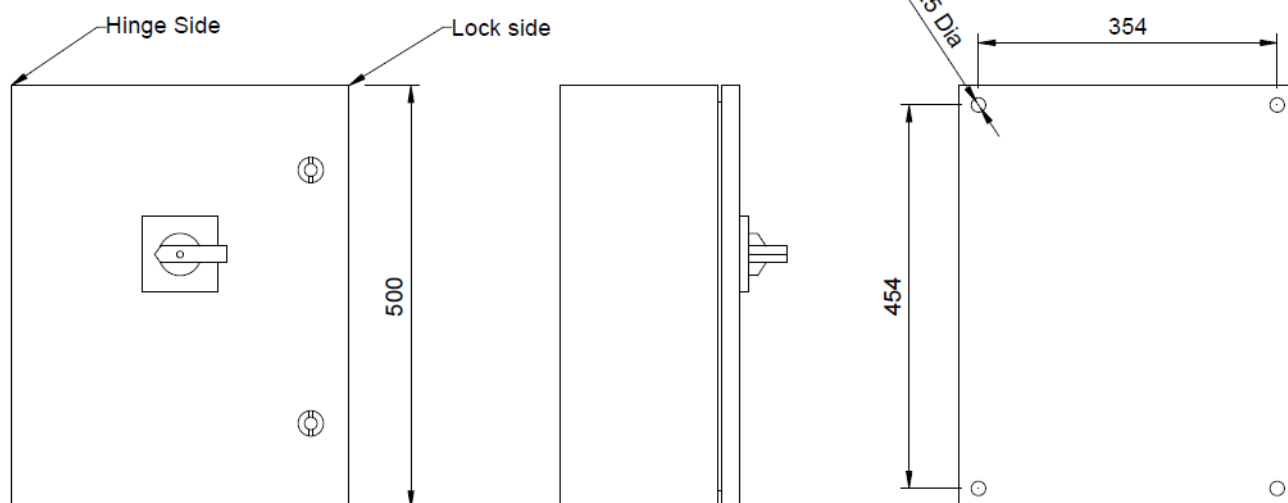
Data		Range	Units	LB1256PME LB1258PME LBC1254PME
Rated Operational Voltage Ue				
IEC & EN		Volts	V	690
Main Switch: Isolating Voltage up to		Volts	V	750
Rated Impulse Withstand Voltage Uimp		Volts	kV	6
Rated Uninterrupted Current Iu		Amps	A	125
Rated Operational Current Ie				
IEC & EN	AC-22A	Up to 690V	A	125
	AC-21A	Up to 690V	A	125
	AC-1	Up to 690V	A	125
Rated Operational Power AC-23A (50-60Hz)				
IEC & EN	3 Phase	220-240V	kW	55
		280-440V	kW	75
		500-690V	kW	90
Rated Operational Power AC-3A (50-60Hz)				
IEC & EN	3 Phase	220-240V	kW	45
		440V	kW	55
		690V	kW	55
Short Circuit Capacity (IEC)				
Max Fuse Size (Type gL)		Amps	A	125
Rated Fused Short Circuit Current		Amps	kA	30
Terminal Specification				
Single/ Multiple Strand Wire			Min-mm <sup>2</sup>	2.5
			Max-mm <sup>2</sup>	50
Fine Strand with Sleeve			Min-mm <sup>2</sup>	4
			Max-mm <sup>2</sup>	50
Recommended Tightening Torque			Nm	2.5

## Dimensions



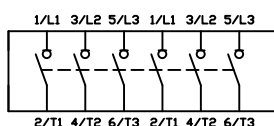
Note:  
Change Over Switch is break before  
make. 3 position, centre Off.

When mounted outside, maintenance  
is required to preserve the enclosure's  
painted finish.

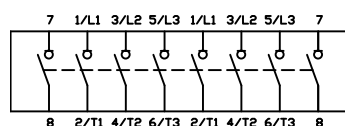


## Terminal Configuration

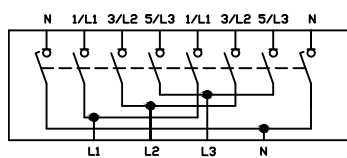
6 Pole Switch  
(Position '0' shown)



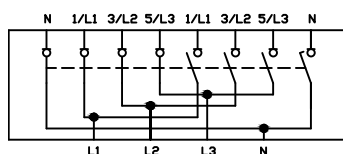
8 Pole Switch  
(Position '0' shown)



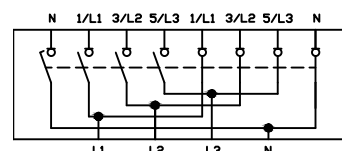
4 Pole Changeover Switch  
(Position '0' shown)



4 Pole Changeover Switch  
(Position '1' shown)



4 Pole Changeover Switch  
(Position '2' shown)



	N	1/L1	3/L2	5/L3	1/L1	3/L2	5/L3	N
I	X	X	X	X				
O								
II					X	X	X	X

Change Over 4 Pole Switch Program

Note: Neutral contact is  
early make / late break

---

## MAINTENANCE OF EUROPA STB ENCLOSURES

The Europa range of STB enclosures will require regular maintenance. This is due to light surface corrosion that may form on the surface of the enclosure from airborne or other sources of contaminants. Failing to remove the surface corrosion will result in the degradation of the paint finish.

The timescale for maintenance will depend on the environment and the location of the installation. For example, if the enclosure has been installed externally and exposed to all weather conditions, the unit will require more frequent maintenance than a unit that has been installed in a sheltered location.

In either case it is recommended that regular inspection is carried out to maintain the integrity of the enclosure.

Maintenance consists of wiping off suspected residual surface rust and contaminants and if necessary, cleaning and then applying a rust inhibitor and touch up paint (colour RAL 7035) if required.

Where enclosures are in exposed or harsh environments or in difficult to access areas such as roof tops and remote locations, Europa would always recommend the ATLAS range of GRP enclosures which requires minimal maintenance.

