

This document must be retained for future reference.

It is the responsibility of the person installing the electrical equipment to ensure that the installation meets the requirements of the IET wiring regulations and is therefore 'fit for purpose'. Factors such as correct selection of components, cable sizing, protective devices and Earth bonding are all critical and should be checked prior to full testing and power-up. Any other regulations applicable to the equipment being installed such as the Machinery Directive and current health and safety legislation must also be adhered to.

All connections (including factory made) must be checked for the correct tightness prior to commissioning of the electrical installation.
All connections should also be inspected periodically to ensure correct tightness.

DO NOT USE POWER TOOLS ON THESE PRODUCTS



Motorised Kits for Changeover Switches 160 - 800A



Electrical Properties		160 - 400A	630 - 800A
Operational Torque	Nm	20	30
Rated Operational Voltage	V	230 Vac/dc	
Operating Voltage Range *(1)	Δ V	0.85*V to 1.15*V	0.9V to 1.1V
Operating Voltage Range acc. IEC 60947-6	Δ V	0.96*V to 1.10*V	
Cable Section of Voltage Supply	mm ²	1.5 - 2.5	
Cable Section area Input Signals	mm ²	0.5 - 1.5	
Cable Section Area Auto-Lock mode Outputs	mm ²	0.5 - 1.5	
Inrush Current (Irms)	A	1.1	
Use Current	mA	45	
Protective Fuse - Reference F1AL250 V (Littelfuse)	A	1	
Operating Angle		-70° / 0° / +70° (I - 0 - II)	
MU number of operations	Cycles	10000	5000
Operation Rate (0-I-II-0)	Cycles/Hour	120	60
Operating Temperature		-25°C + 55°C	
Transportation and storage temperature		- 40°C + 70°C	
Weight	Kg	1.8	

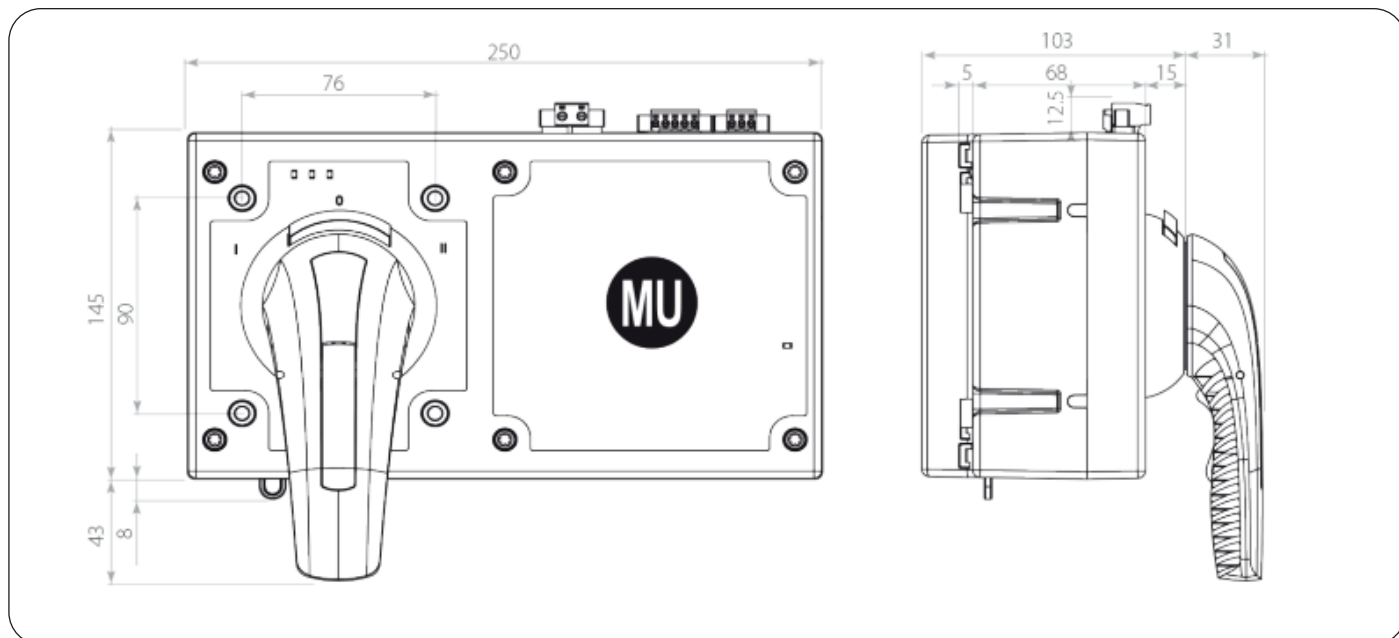
*(1) Based on internal tests

Switching Times			
Pos.	Direction	Pos.	Operating time
0	→	I	750 ms
I	→	0	750 ms
0	→	II	750 ms
II	→	0	750 ms
I	→	II	1.5 seg
II	→	I	1.5 seg

Note: Install a Type 2 Surge Protection Device (SPD) according to IEC61643-1 in the voltage supply to the unit.

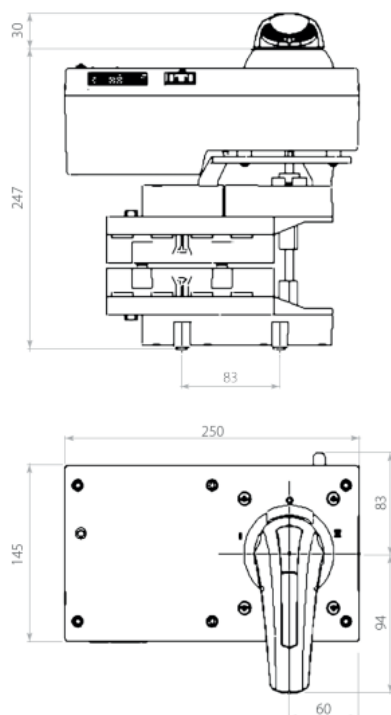
Motorised Kits for Changeover Switches 160 - 800A

Dimensions

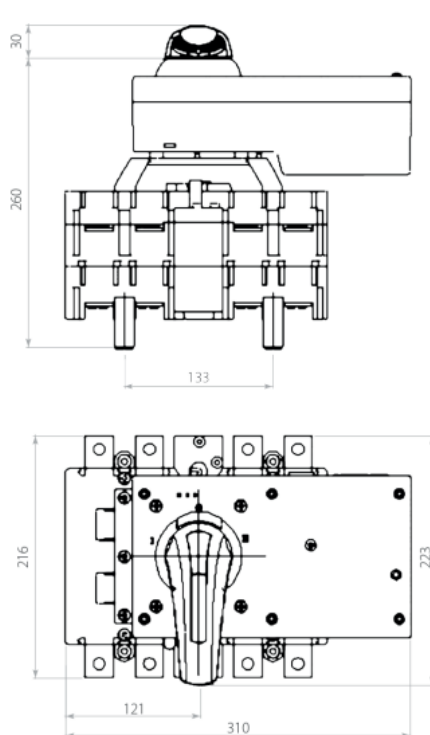


Changeover Switch

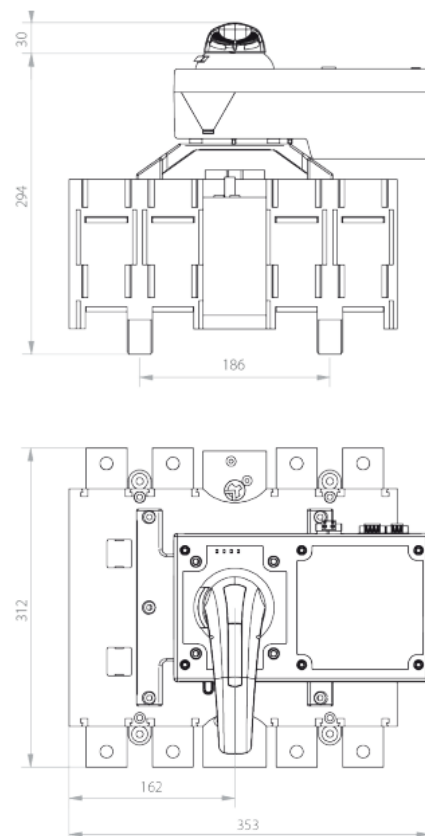
LBCDMK010 160-250A



LBCDMK020 315-400A



LBCDMK030 630-800A



Note: Changeover Switches to be ordered separately