

This document must be retained for future reference.

It is the responsibility of the person installing the electrical equipment to ensure that the installation meets the requirements of the IET wiring regulations and is therefore 'fit for purpose'. Factors such as correct selection of components, cable sizing, protective devices and Earth bonding are all critical and should be checked prior to full testing and power-up. Any other regulations applicable to the equipment being installed such as the Machinery Directive and current health and safety legislation must also be adhered to.

All connections (including factory made) must be checked for the correct tightness prior to commissioning of the electrical installation.
All connections should also be inspected periodically to ensure correct tightness.

DO NOT USE POWER TOOLS ON THESE PRODUCTS



LBD10003P/PSN | LBD12503P/PSN

AC-22@400V(415V)

Door Interlocked Switch-Disconnecter

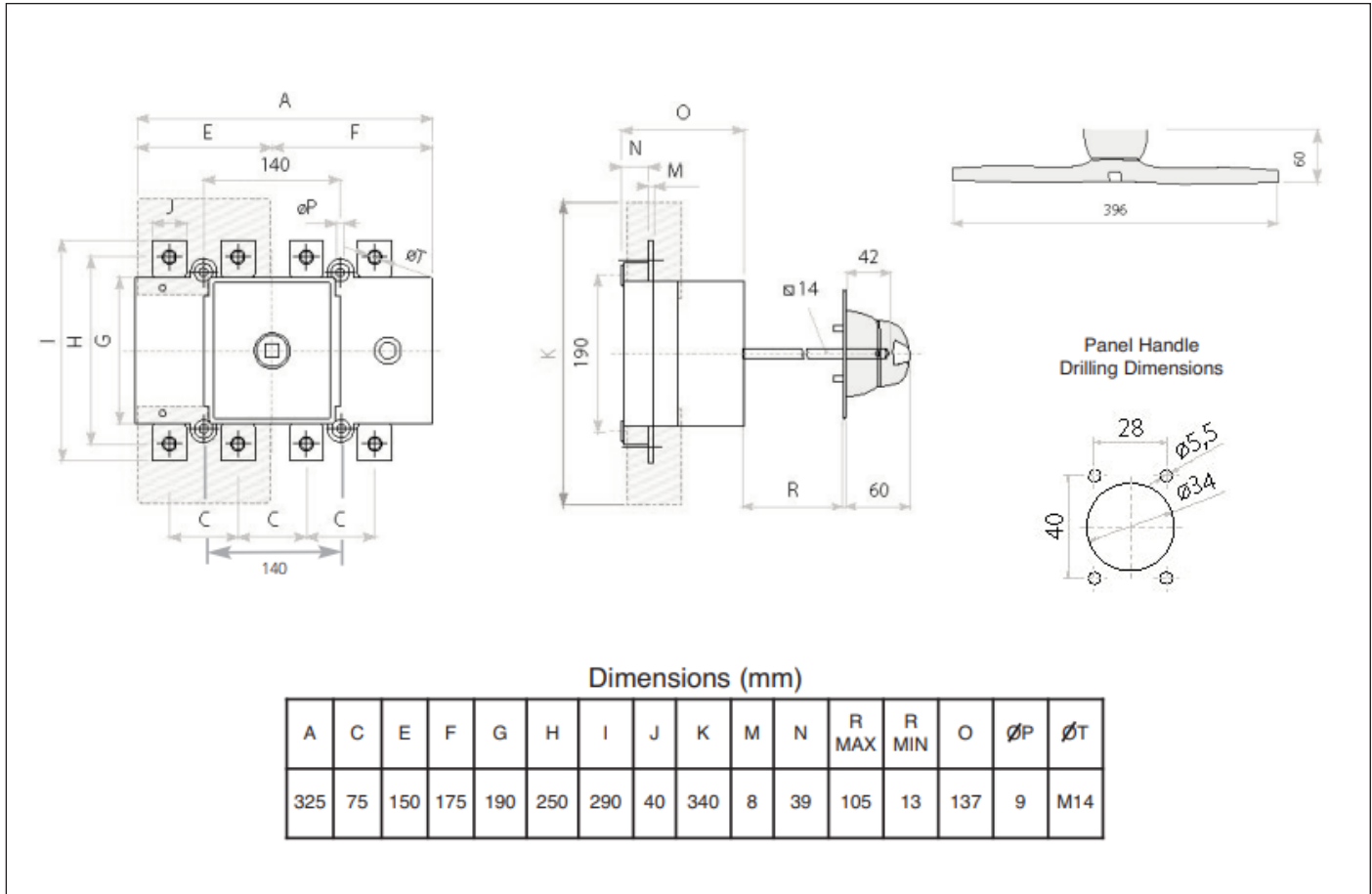
- EN 60947-1 & 3 Compliant
- IP65



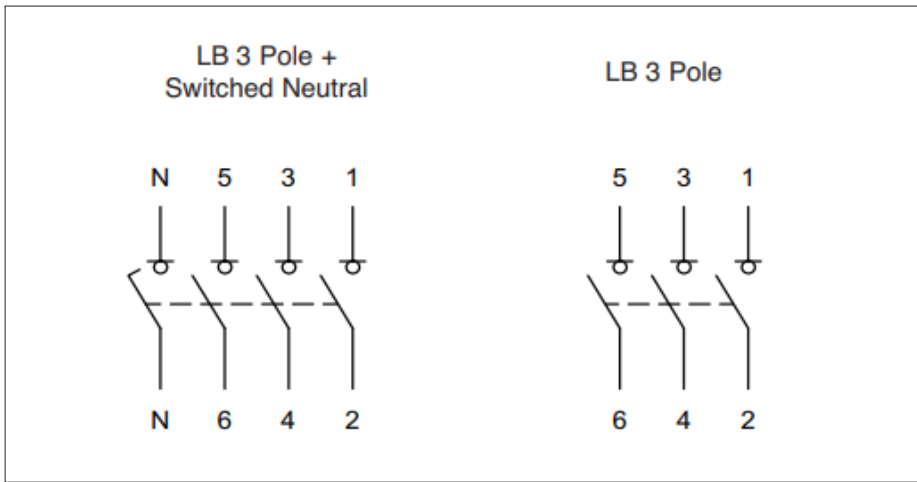
Data	Range	Units	LBD10003P LBD10003PSN	LBD12503P LBD12503PSN
Rated thermal current I _{th} at 40°C	Amps	A	1000	1250
Rated insulation voltage U _i	Volts	V	1000	
Rated dielectric strength	Volts	kV	8	
Rated impulse voltage U _{imp}	Volts	kV	12	
Rated operational current I _e at 400V AC-22A	Amps	A	1000	1250
Rated operational current I _e at 400V AC-23A	Amps	A	1000	
Rated operational power P _e at 400V AC-23A	Watts	kW	554	
Rated breaking capacity at 400V AC23A	Amps	A	8000	
Rated making capacity at 400V AC23A	Amps	A	10000	
Rated short circuit making capacity (peak value) I _{cm}	Amps	kA	60	
Rated short-time withstand current (1 sec) rms I _{cw}	Amps	kA	25	
Minimum number of mechanical operations	-	Cycles	10,000	
Terminal Capacity (rigid copper cable)	-	mm ²	2x300	
Lug bolt size	-	-	M14	
Tightening torque	-	Nm	45	

LBD10003P/PSN AC-22
Door Interlocked Load Break Switches

Enclosure Dimensions



Terminal Configuration



Note: Neutral Contact is Early Make/Late Break

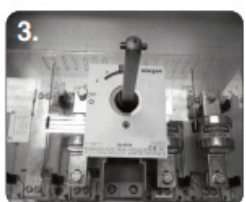
LBD10003P/PSN AC-22

Door Interlocked Load Break Switches



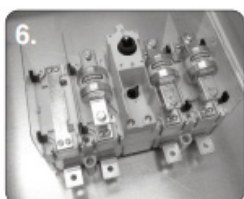
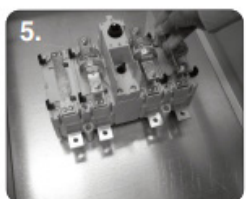
Handle Assembly:

1. Ensure that the handle is in the off position and locate the handle on to the door with the handle showing the off position at 9 o' clock
2. Tighten the four M5, flange nuts to 1.5Nm



Shaft Assembly:

3. Ensure that the switch is in the off position and fully insert the shaft into the switch with the cross pin in a horizontal position
4. Tighten the M5 shaft grub screw to 1.2Nm using a 2.5mm A/F allen key



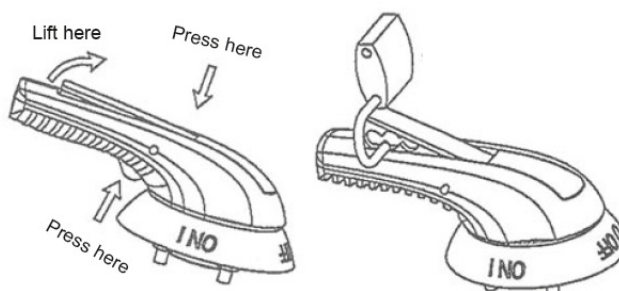
Fuse Shroud Assembly:

(SWITCH FUSE ONLY)

- 5/6. Install the four upright shrouds into the corresponding clips
7. Install fuse shroud into the corresponding clips



Padlock Operation



Door Interlock Defeat

Mechanism (For Authorised Personnel Only);

WARNING! ACCESS TO LIVE PARTS

- Ensure that the door is closed and the handle is in the on position
- Locate the hole on the right side of the handle, then push and hold a small pin into the hole to activate the defeat mechanism
- The door can now be opened in the on position. Remove pin and close the door to reset the mechanism



Handles, Shafts and Extended Shafts for Enclosed and Door Interlocked Switch-Disconnectors

Product Prefix	Blue & White Handle	Red & Yellow Handle	Shaft Section (mm)	L (mm)	P (mm)	S (mm)	D (mm)
Standard Handle and Shafts							
LB160/LBD160	LBPHBW010	LBPHRY010	□7	177	87-197	94	45
LB200/LBD200							
LB250/LBD250							
LB315/LBD315	LBPHBW020	LBPHRY020	□10	227	103-256	115	45
LB400/LBD400							
LB500/LBD500	LBPHBW030	LBPHRY030	□14	195	134-240	143	60
LB630/LBD630							
LB800/LBD800							
LB1000/LBD1000	LBPHBW090	LBPHRY090		186	145-242	396	
LB1250/LBD1250							
Extended Shafts							
Product Prefix	Extended Shaft Type 1	Shaft Section (mm)	L (mm)	P (mm)	Extended Shaft Type 2	L (mm)	P(mm)
LBD160	LBES010	□7	250	87-270		387	87-407
LBD200							
LBD250							
LBD315	LBES030	□10	376	103-404		536	103-565
LBD400							
LBD500	LBES050	□14	345	134-390		535	134-580
LBD630							
LBD800				145-401			145-591
LBD1000							
LBD1250							

