

This document must be retained for future reference.

It is the responsibility of the person installing the electrical equipment to ensure that the installation meets the requirements of the IET wiring regulations and is therefore 'fit for purpose'. Factors such as correct selection of components, cable sizing, protective devices and Earth bonding are all critical and should be checked prior to full testing and power-up. Any other regulations applicable to the equipment being installed such as the Machinery Directive and current health and safety legislation must also be adhered to.

All connections (including factory made) must be checked for the correct tightness prior to commissioning of the electrical installation. All connections should also be inspected periodically to ensure correct tightness.

DO NOT USE POWER TOOLS ON THESE PRODUCTS



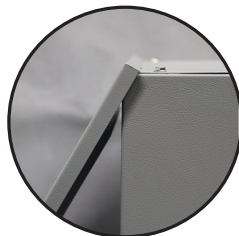
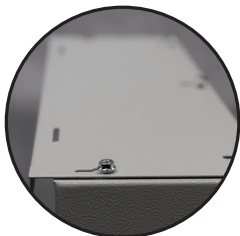
## TPNXXSPD2MCB

TPN 3 Phase Boards (125A) inc. TYPE 2 SPD and MCB PREWIRED

### Description

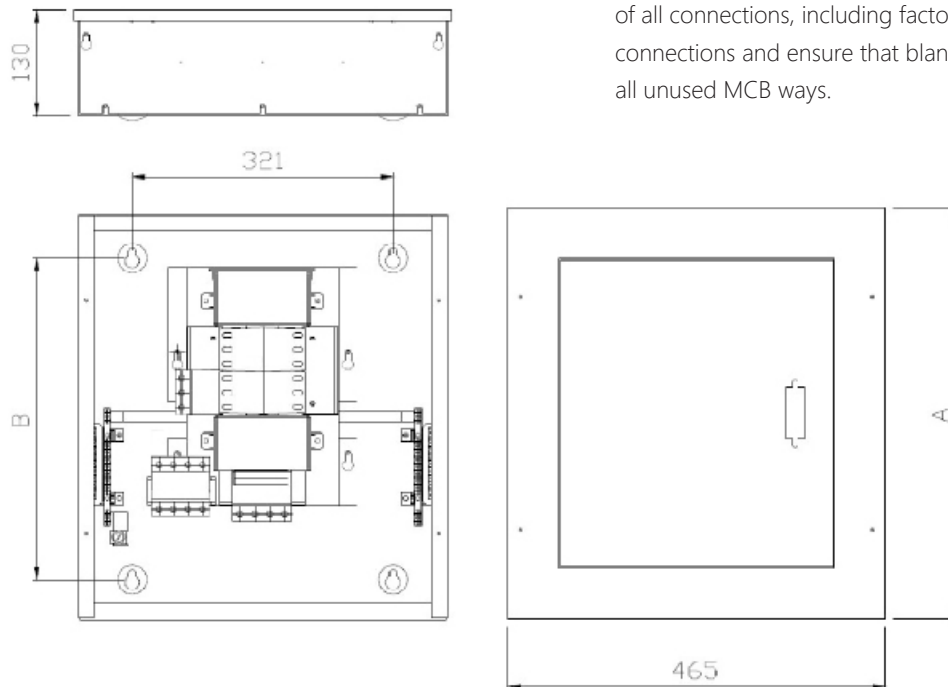
- Pre wired with 125a 4P Mainswitch
- 63A MCB for local isolation of Type 2 Mersen SPD
- For commercial and industrial applications
- Key-release door for added protection
- Top and bottom 1mm thick gland plates allow easy access into the board

### Features & Benefits



- Key-hole top and bottom gland plates for fixing screws. Screws do not need to be removed to release gland plates. 1mm thick rigid design ideal for SWA cable glands.
- Top hook feature on front cover - lid can be securely hung while fixing screws are installed.
- 125A 4 Pole Mainswitch fitted.
- Easily removable busbar pan assembly with key hole slots reduces product weight when installing distribution board onto the wall.
- Half din rail for outgoing devices fitted to allow simple and fast fitting and removal of devices.
- Protection from transient overvoltage by the Mersen Type 2 SPD provided.

## Dimensions



### Please Note:

Before fitting the front cover, check the tightness of all connections, including factory made connections and ensure that blanks are fitted to all unused MCB ways.

Part Number	Single Phase Ways	Three Phase Ways	A (mm)	B (mm)
TPN03SPD2MCB	9	3	507	392
TPN05SPD2MCB	15	5	561	446
TPN07SPD2MCB	21	7	615	500
TPN09SPD2MCB	27	9	669	554
TPN11SPD2MCB	33	11	723	608
TPN13SPD2MCB	39	13	778	662
TPN15SPD2MCB	45	15	831	716
TPN17SPD2MCB	51	17	855	770

### Board Specification

Rated Current [A]	125
Rated Voltage [V]	415
Material	Metal
Door Type	Solid
Finish	RAL 7035
IP Rating	IP30
Mounting	Wall
Standards	BS EN 61439-3

### SPD Specification

SPD Part Number	83020147
Earthing System	TT/TN (3P+N)
$U_n$ [VAC]	415
$I_{max}$ (8/20) [kA]	40
$I_n$ (8/20) [kA]	20
$U_p@I_n$ (8/20) [KV]	$\leq 1.30$ (L-N) $\leq 1.5$ (N-PE)
Cartridge Part No. (L)	83020002
Cartridge Part No. (N)	83020000