

This document must be retained for future reference.

It is the responsibility of the person installing the electrical equipment to ensure that the installation meets the requirements of the IET wiring regulations and is therefore 'fit for purpose'. Factors such as correct selection of components, cable sizing, protective devices and Earth bonding are all critical and should be checked prior to full testing and power-up. Any other regulations applicable to the equipment being installed such as the Machinery Directive and current health and safety legislation must also be adhered to.

All connections (including factory made) must be checked for the correct tightness prior to commissioning of the electrical installation.
All connections should also be inspected periodically to ensure correct tightness.

DO NOT USE POWER TOOLS ON THESE PRODUCTS



LB323PSNBBS

Screwless 32A 3 P + Sw. Neutral Switch Disconnecter

✓ IP65 Rated ✓ IEC / EN 60947-3 ✓ Polycarbonate Enclosure

Padlockable in the OFF position.
Screwless switch.
Screw earth and neutral terminals included.



Data		Range	Units	LB323PSNBBS
Rated Operational Voltage Ue				
IEC & EN		Volts	V	690
Main Switch: Isolating Voltage up to		Volts	V	750
Rated Impulse Withstand Voltage Uimp		Volts	kV	6
Rated Uninterrupted Current Iu		Amps	A	32
Rated Operational Current Ie				
IEC & EN	AC-22A	Up to 690V	A	32
	AC-21A	Up to 690V	A	40
	AC-1	Up to 690V	A	40
Rated Operational Power AC-23A (50-60Hz)				
IEC & EN	3 Phase	220-240V	kW	15
		280-440V	kW	22
		500-690V	kW	22
Rated Operational Power AC-3 (50-60Hz)				
IEC & EN	3 Phase	220-240V	kW	11
		440V	kW	15
		690V	kW	15
Short Circuit Capacity (IEC)				
Max Fuse Size (Type gL)		Amps	A	32
Rated Fused Short Circuit Current		Amps	kA	30
Terminal Specification				
Single/ Multiple Strand Wire			Min-mm ²	2.5
			Max-mm ²	10
Fine Strand with Sleeve			Min-mm ²	0.75
			Max-mm ²	6

LB323PSNBBS

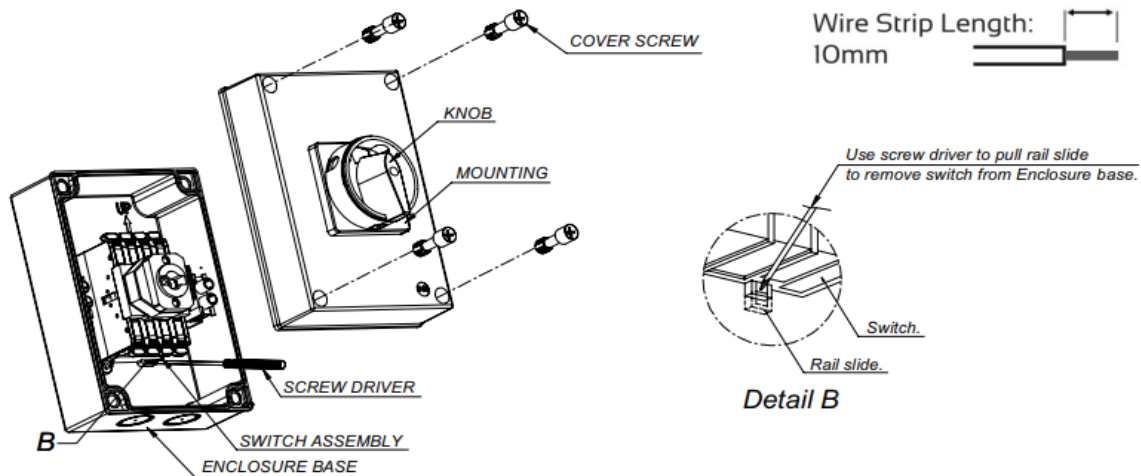
Screwless 32A 3 P + Sw. Neutral Switch Disconnecter

Screwless Terminals

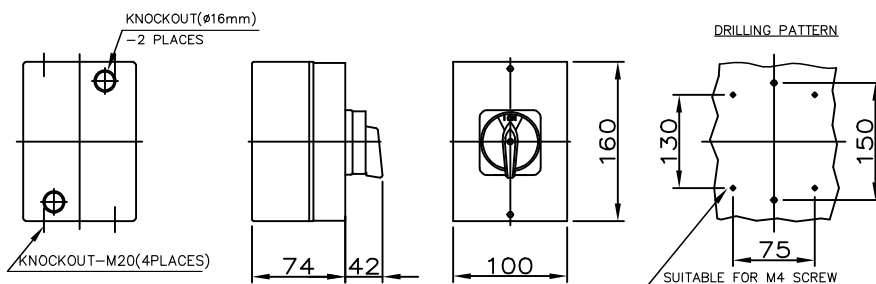
To operate, lift tabs until terminals are exposed. Insert wire then flick the tab back to the closed position. Ensure that the wire is secure by pushing down the tab and tugging lightly on the wire. Ensure that the insulation is not clamped.



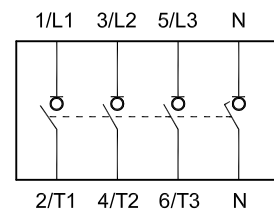
Switch Removing Details



Dimensions



3 Pole + Switch Neutral



Note: Neutral contact is Early make/ Late break

Procedure to dismantle the cover:

- Ensure the switch is in the OFF position
- Unscrew the cover screws & remove the cover
- For easy wiring, the switch can be removed from the base & then clicked back into place once wiring is complete
- After wiring ensure the profile orientation of the actuating spindle & knob shaft are in the same position
- Replace the cover & take care not to overtighten the screws (recommended tightening torque 0.5Nm)
- Do not install using power driven screwdrivers

Please Note : There is no need to remove the switch handle in order to remove the cover